

## Word Cards

### Word Cards from previous lessons needed for this lesson:

- Society – Word Card #2 from Lesson 1
- Culture – Word Card #4 from Lesson 1
- Archaeology – Word Card #5 from Lesson 1
- Anthropology – Word Card #6 from Lesson 1
- Stone Age – Word Card #12 from Lesson 2
- Evidence – Word Card #18 from Lesson 2
- Artifact – Word Card #19 from Lesson 2
- Human Migration – Word Card #25 from Lesson 4
- Paleolithic Age or Era – Word Card #26 from Lesson 5
- Foragers – Word Card #27 from Lesson 5

### 32 the Great Thaw

an event that happened about 10,000 years ago when the Earth's climate warmed and regions of the planet became more temperate

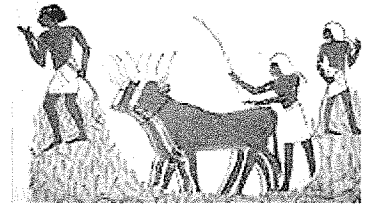


**Example:** After the Great Thaw many plants and animals began to flourish due to the warmer climate.

(SS070206)

### 33 agrarian

a type of society or culture based around farming and raising livestock



**Example:** Thomas Jefferson saw the United States as an agrarian society.

(SS070206)

### 34 turning point

an event or occurrence which causes a very significant change

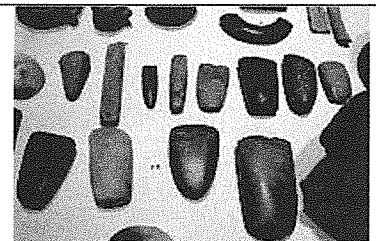


**Example:** The Agricultural Revolution was a turning point in human history.

(SS070206)

### 35 Neolithic Age or Era

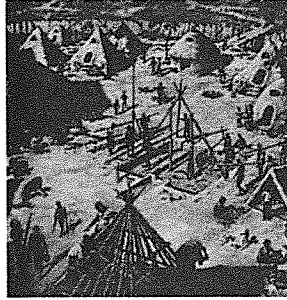
a term that means "new stone age" and refers to period when humans came to live in agricultural communities



**Example:** The Neolithic Age began nearly 10,000 years ago.

(SS070206)

**36  
Agricultural  
Revolution (or  
Neolithic  
Revolution)**



a turning point that began about 10,000 years ago when humans began to live in settled communities and raise plants and animals

**Example:** The development of new technology that allowed humans to become more efficient farmers is called the Agricultural Revolution.

(SS070206)

**37  
BCE  
Before  
Common Era**

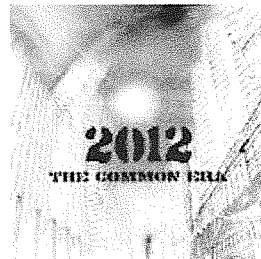


a non-religious alternative to the use of B.C., the era of prehistory and much of antiquity

**Example:** My textbook uses the annotation, BC, but scholarly work refers to that period as BCE.

(SS070206)

**38  
CE  
Common Era**

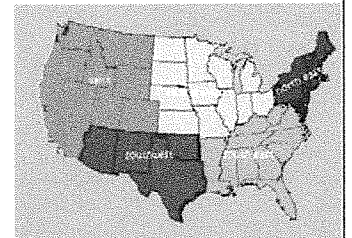


an alternative and non-religious method of notation to the traditional A.D., or *Anno Domini*

**Example:** The period referred to CE or AD is the time frame starting with 0 on the Gregorian calendar.

(SS070206)

**39  
region**



a geographic area considered as a unit for geographical, functional, social, or cultural reasons

**Example:** The Great Lakes region is comprised of all the places that border the Great Lakes.

(SS070206)